

ThermalCapture 2.0 USB Driver Installation

ThermalCapture 2.0 needs a Virtual COM Port Driver to be usable on Microsoft Windows systems. This driver can be obtained from the [STMicroelectronics website](#).

On Windows 7 and Windows 8 the driver is automatically used for ThermalCapture 2.0 after connecting the device. On Windows 10 the driver has to be installed manually. The following step-by-step guide shows how to do both steps.

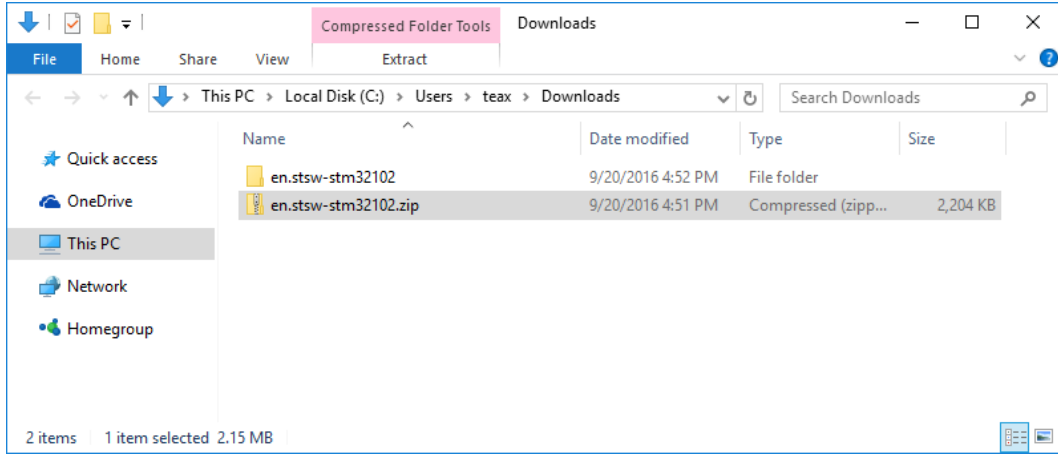
Step 1 has to be done for all Microsoft Windows versions. Step 2 only has to be performed on Microsoft Windows 10 systems, or if connection is not fully working on Windows 7/8 systems.

Content Of This Document

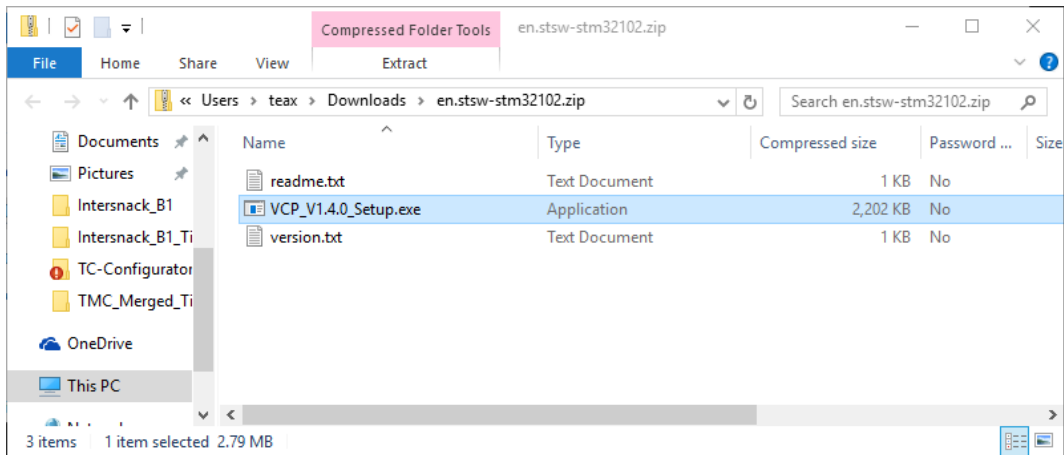
ThermalCapture 2.0 USB Driver Installation	1
Content Of This Document	1
1. STM Driver Setup Program	2
2. Assign Driver To ThermalCapture 2.0	5
3. Test With FLIR Camera Controller GUI	11

1. STM Driver Setup Program

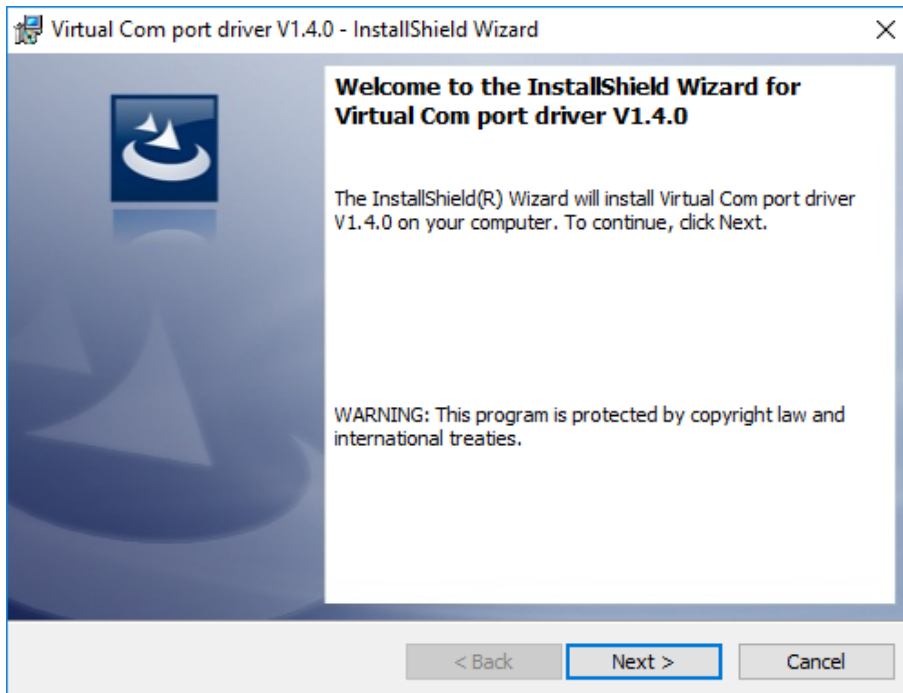
After downloading the ZIP file, extract the driver installation files.



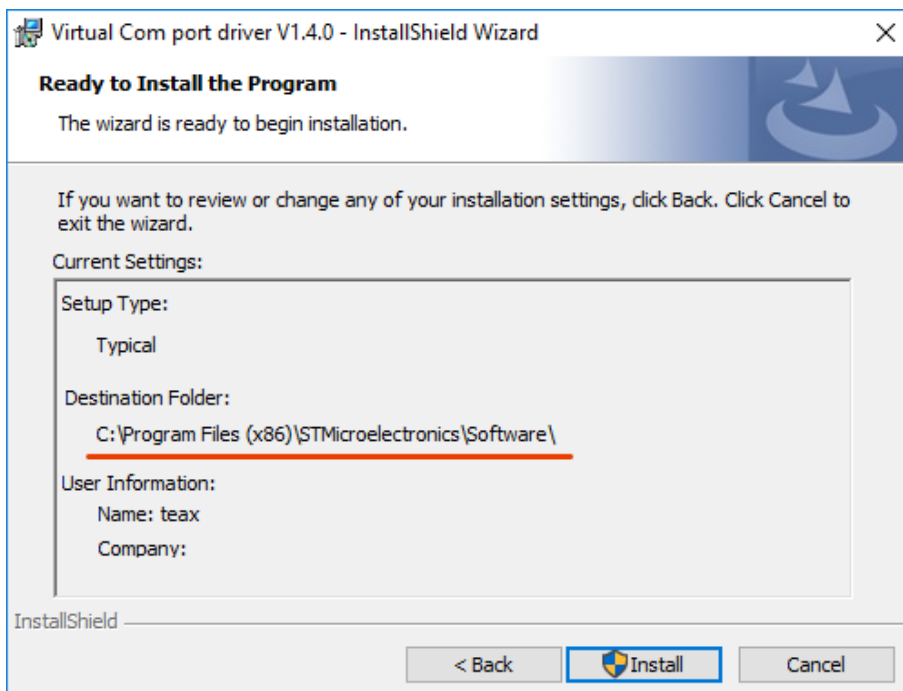
Run the file **VCP_V1.4.0_Setup.exe** from the newly extracted folder.



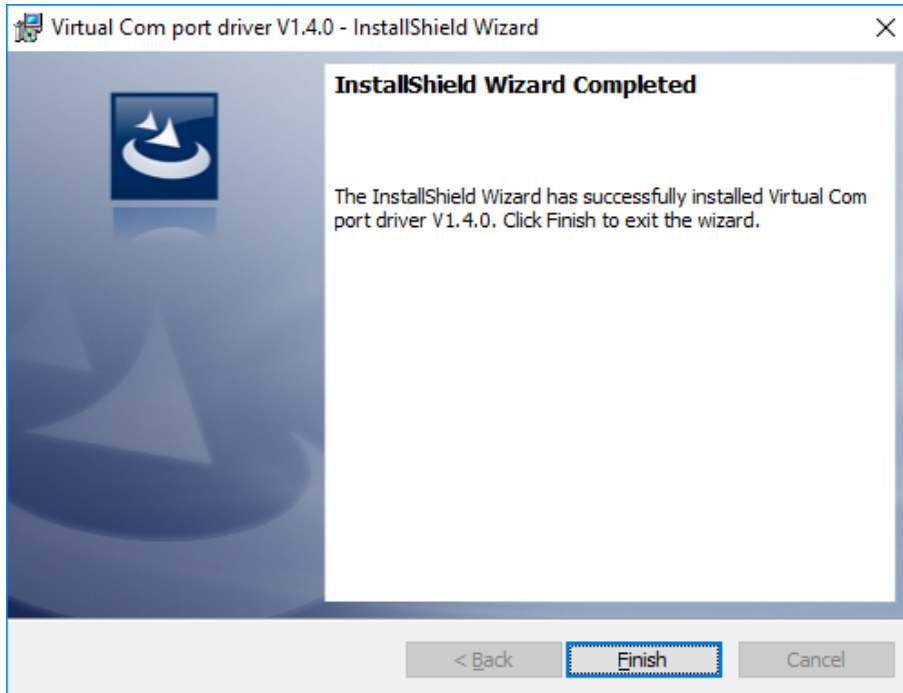
Acknowledge the welcome screen by clicking on “Next >” button.



On the next screen make sure to remember the installation “Destination Folder”, since this is needed later and click on “Install”.



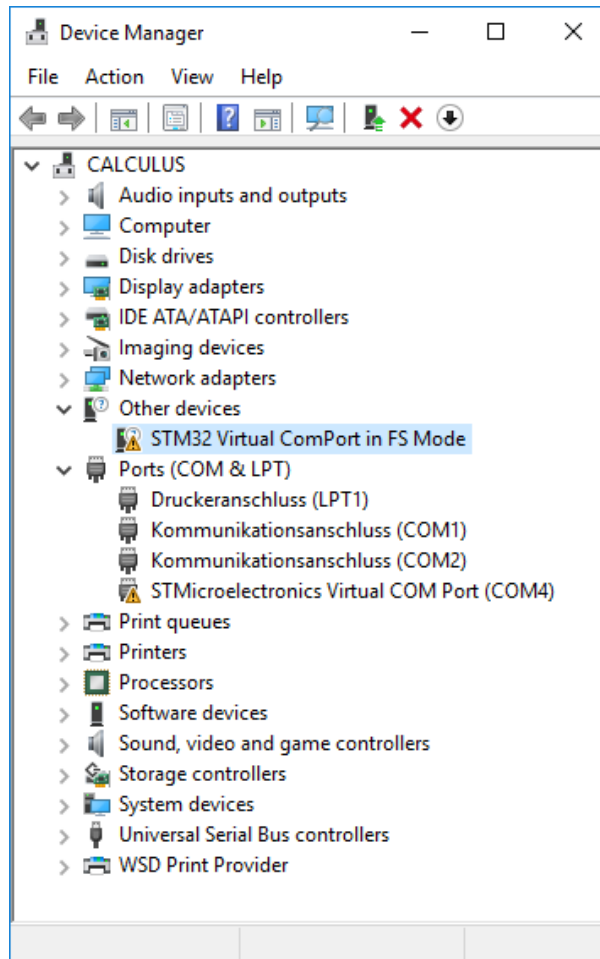
After successful installation the wizard shows its finish screen. Close the program by clicking on "Finish".



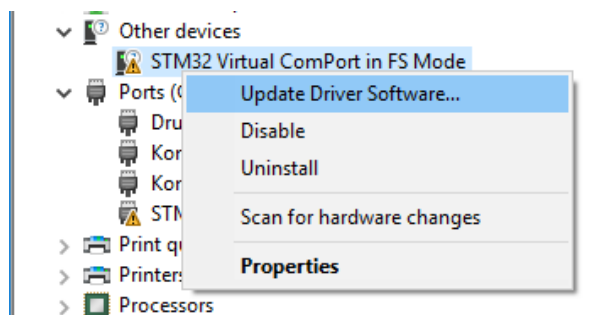
If you are using Microsoft Windows 7 or Microsoft Windows 8, please go ahead with chapter 3. If no connection can be established between ThermalCapture 2.0 and the FLIR Camera Controller GUI, please execute steps from chapter 2.

2. Assign Driver To ThermalCapture 2.0

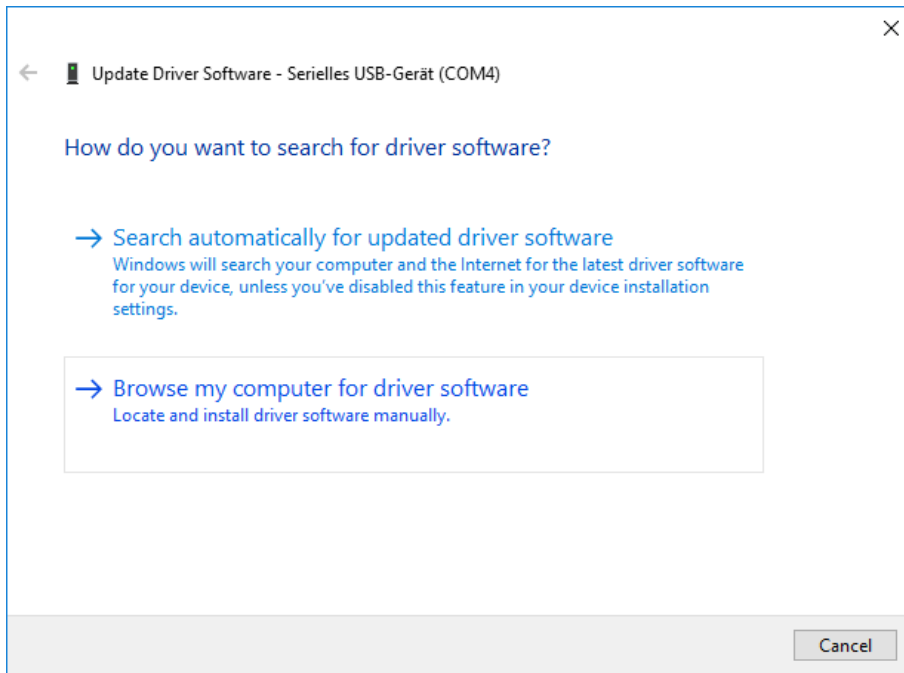
Connect ThermalCapture 2.0 to the PC and open Microsoft Windows Device Manager. Within the section “Other devices” there will be a new device called “STM32 Virtual ComPort in FS Mode”.



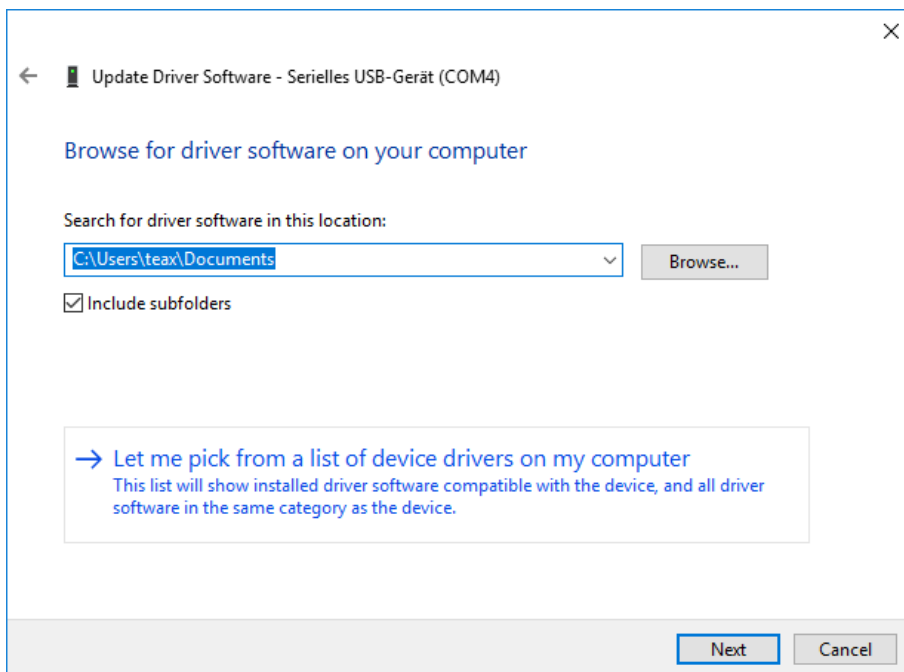
Right-click on this device and select “Update Driver Software...”.



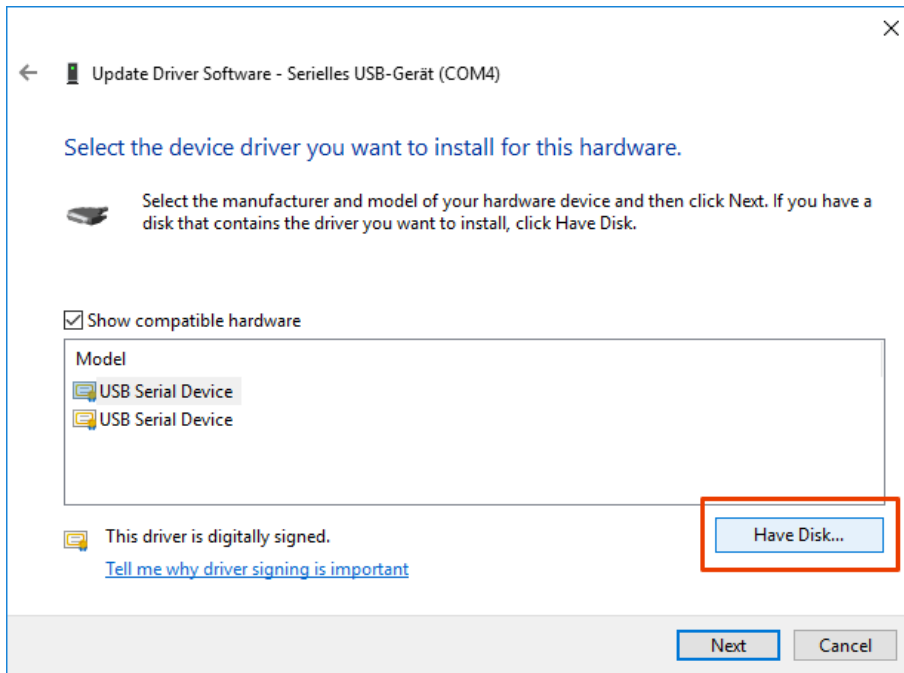
Within the newly opened dialog select the option “Browse my computer for driver software”.



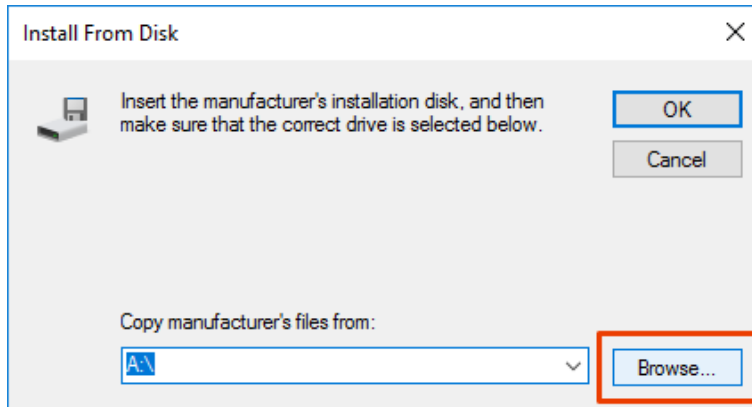
In the second dialog select the option “Let me pick from a list of device drivers on my computer”.



In the third dialog click on “Have Disk...” button.



In the “Install From Disk” dialog click on “Browse...” button.



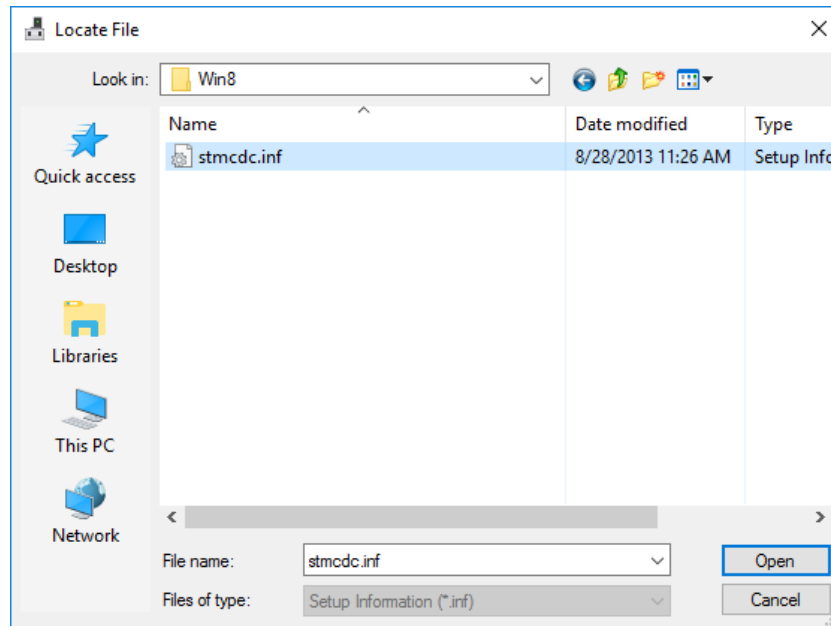
In the “Locate File” dialog browse to the destination folder from above. Then go to the sub-folder “Virtual comport driver\Win8”

Normally the complete path is:

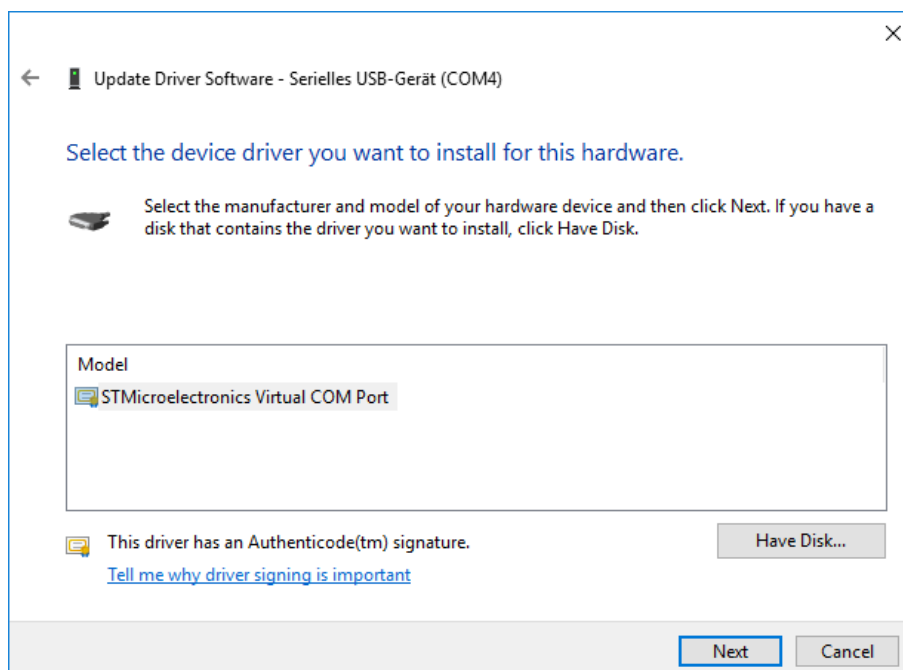
C:\Program Files (x86)\STMicroelectronics\Software\Virtual comport driver\Win8

Within that folder select the file “stmcdc.inf” and click on “Open” button.

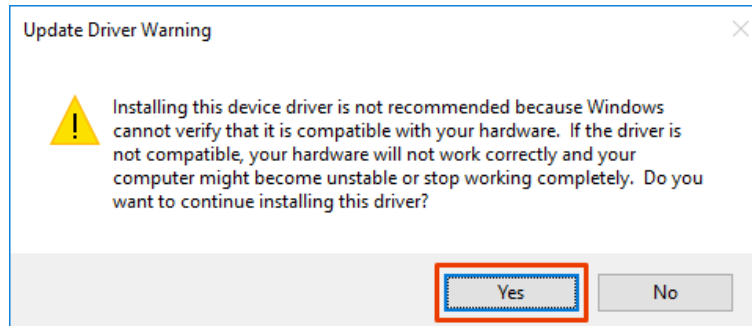
Note: If you are on a Windows 7 system, please use folder Win7.



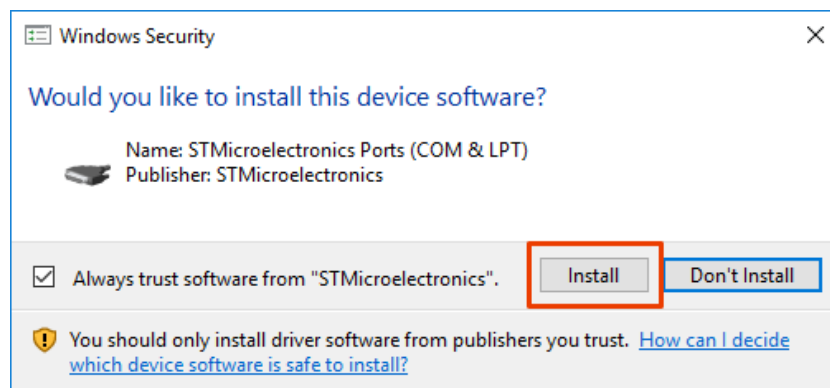
In the “Select the driver you want to install for this hardware” dialog it should now say “STMicroelectronics Virtual COM Port” for the model.



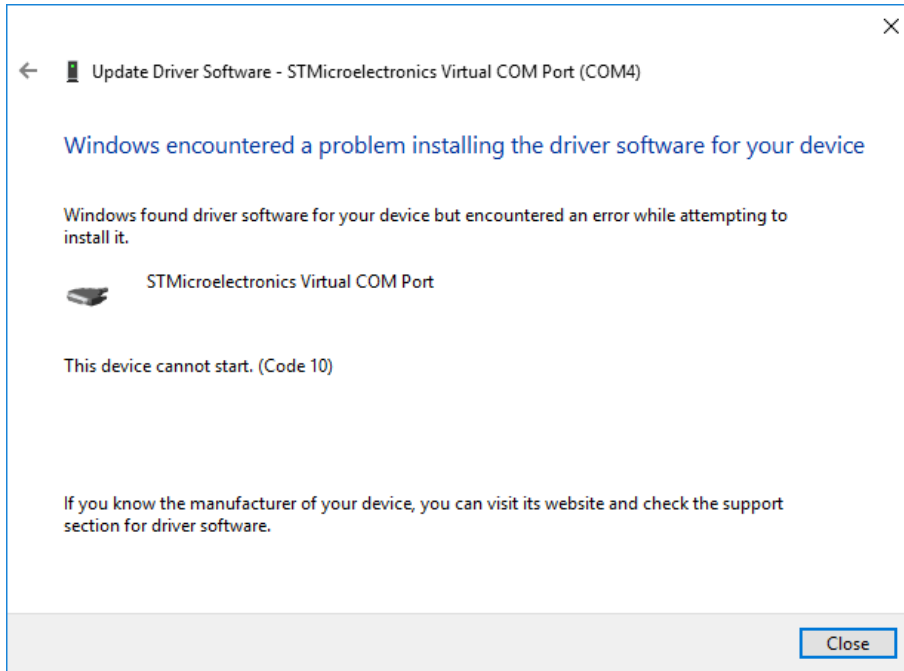
In some cases, Microsoft Windows will give an “Update Driver Warning” dialog and ask if this driver should really be installed. This dialog has to be confirmed with the “Yes” button.



In the “Windows Security” dialog click on the “Install” button to finish last step of driver installation.

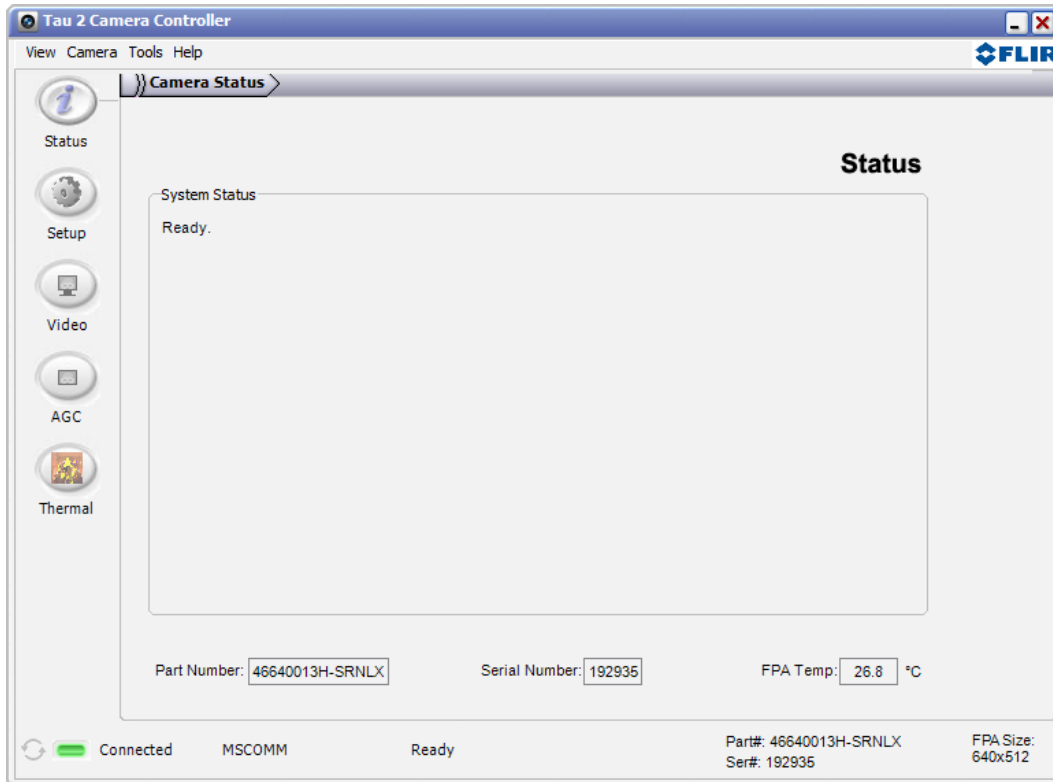


After installation Microsoft Windows 10 sometimes complains that “*Windows encountered a problem installing the driver software for your device*”. This dialog can be safely ignored and closed using the “*Close*” button.



3. Test With FLIR Camera Controller GUI

Open the FLIR Camera Controller GUI. If you don't have it installed yet, you can obtain it [here](#).



After connecting to the camera, there should be a green light and the word "Connected" on the lower left end of the window. Also "Part Number" and "Serial Number" should match your camera.

If connection is still not working, or if you have any other question regarding ThermalCapture 2.0, please contact our service via [support-email](#).